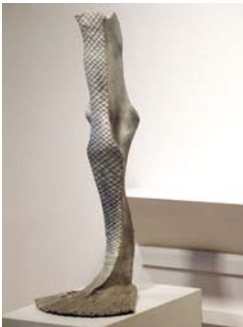


TIM HAWKINSON
May 2nd - June 16th, 2007



TIM HAWKINSON (1960-)
Crow's Nest, 1998
Pastel, Pollen and beeswax on paper
on polystyrene substrate
144 x 384 x 1 1/2 in.
365.8 x 975.4 x 3.8 cm

I made pastel rubbings on craft paper of a wooden deck containing a hot tub. The rubbings were reassembled into this three-masted sailing ship. The hot tub, with pump, filter, and water heater, is the ship's crow's nest.



TIM HAWKINSON (1960-)
The Fin Within, 1995
Aluminum
36 x 15 x 15 in.
91.4 x 38.1 x 38.1 cm

I made a plaster mold of the space between my legs and carved the outer surfaces to look like a fish's tail. Then, the plaster was cast in aluminum.



TIM HAWKINSON (1960-)

Penitent, 1994

Rawhide dog chews and slide whistle;
motorized, with sound

48 x 18 x 18 in.

121.9 x 45.7 x 45.7 cm

Rawhide dog bones were assembled into a human skeleton. The ribcage houses a device that emits a whistle as if calling for a dog.



TIM HAWKINSON (1960-)

Balloon Self Portrait #4, 1996

Latex and air

72 x 48 x 33 inches

182.9 x 121.9 x 83.8 cm

Latex rubber was painted over my depilatoried body, then removed, turned inside out, and inflated with air.



TIM HAWKINSON (1960-)

Gun, 1998

Newspaper and bread dough

3.25 x 23 x 1.75 in.

8.3 x 58.4 x 4.4 cm

Two basic elements - newspaper and bread - are broken down and reformed into the instrument of destruction from which the title is derived.



TIM HAWKINSON (1960-)
Fat Head Balloon Self-Portrait, 1993
Studio clothing, latex, air, and
basketball hoop
101 in. x 70 in. x 40 in.
256.5 x 177.8 x 101.6 cm

Rubber "skins" lifted from my head, hands, and knees, welded into a rubber-sealed body made up of shirt, pants, and socks, inflated with air, and suspended in a basketball hoop.



TIM HAWKINSON (1960-)
Prototype for Pentecost, 2000
urethane foam
70 x 22 1/2 x 14 in.
177.8 x 57.2 x 35.6 cm

I lay in a bathtub that was slowly being filled with black paint. A photograph was taken every few minutes as the liquid crept up and over diminishing islands of my skin. Superimposing these contoured steps, a three dimensional figure emerged which was then reproduced in green styrofoam and became the model for the figures used in the piece "Pentecost".



TIM HAWKINSON (1960-)

Ranting Mop Head (Synthesized Voice), 1995

mop, lectern and mixed media;
motorized, with sound

Mop: 67 x 24 x 24" (170.2 x 61 x 61
cm)

Lectern: 50 x 17 x 27" (127 x 43.2 x
68.6 cm)

Cable: 204" (518.2 cm) (length)

A stream of compressed air hits a plastic reed located at the base of the mop, making a sound that is textured and manipulated by different valves, diaphragms, and resonating chambers. Hard consonant and harmonic vowel sounds are created. The sounds were worked into a vocabulary of speech fragments, assembled into simple words, and the words were put together in a few basic, often bizarre phrases: "Are you my mommy?", "I want to mop your violin." The cues for these phrases were recorded, player-piano fashion, onto a repeating scroll that runs through the playing mechanism built into the podium, telling the mop head what to say.



TIM HAWKINSON

Laocoon, 2004

Paper, wire, string, foam, rubber

156 x 108 x 60 inches

396.2 x 274.3 x 152.4 cm